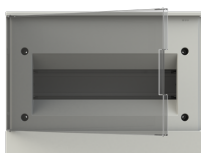


PRODUCT-DETAILS

BEF402212

BEF402212 Consumer Unit (with terminal bars)



General Information

Extended Product Type	BEF402212
Product ID	1SZR004002A1204
EAN	3800500733197
Catalog Description	BEF402212 Consumer Unit (with terminal bars)
Long Description	basic E Flush Mounted Transparent Grey Door 12 Module

Dimensions

Product Net Width	300 mm
Product Net Height	220 mm
Product Net Depth / Length	105 mm
Product Net Weight	0.83 kg

Container Information

Package Level 1 Units	box 1 piece
Package Level 1 Width	300.000 mm
Package Level 1 Height	220.000 mm
Package Level 1 Depth / Length	105.000 mm
Package Level 1 Gross Weight	0.83 kg
Package Level 1 EAN	3800500733197

Package Level 2 Units	17 piece
Package Level 2 Width	760.000 mm
Package Level 2 Height	335.000 mm
Package Level 2 Depth / Length	570.000 mm
Package Level 2 Gross Weight	14.19 kg
Package Level 2 EAN	3800161600180

Ordering

Minimum Order Quantity	1 piece
Customs Tariff Number	85381000
Country of Origin	Bulgaria (BG)

Certificates and Declarations (Document Number)

Declaration of Conformity - CE	No declaration needed
Instructions and Manuals	No document needed

Popular Downloads

Data Sheet, Technical Information	No document needed
Instructions and Manuals	No document needed

Classifications

ETIM 7	EC000214 - Small distribution board
ETIM 8	EC000214 - Small distribution board
WEEE Category	Product Not in WEEE Scope

Categories

Low Voltage Products and Systems → Enclosures → Consumer Units → Consumer Units → basic E Flush Mounted

