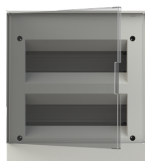


PRODUCT-DETAILS

BEF402224

BEF402224 Consumer Unit (with terminal bars)



General Information

| | |
|-----------------------|---|
| Extended Product Type | BEF402224 |
| Product ID | 1SZR004002A1207 |
| EAN | 3800500733272 |
| Catalog Description | BEF402224 Consumer Unit (with terminal bars) |
| Long Description | basic E Flush Mounted Transparent Grey Door 24 Module |

Dimensions

| | |
|----------------------------|---------|
| Product Net Width | 300 mm |
| Product Net Height | 335 mm |
| Product Net Depth / Length | 105 mm |
| Product Net Weight | 1.15 kg |

Container Information

| | |
|--------------------------------|---------------|
| Package Level 1 Units | box 1 piece |
| Package Level 1 Width | 300.000 mm |
| Package Level 1 Height | 335.000 mm |
| Package Level 1 Depth / Length | 105.000 mm |
| Package Level 1 Gross Weight | 1.15 kg |
| Package Level 1 EAN | 3800500733272 |

| | |
|--------------------------------|---------------|
| Package Level 2 Units | 11 piece |
| Package Level 2 Width | 760.000 mm |
| Package Level 2 Height | 335.000 mm |
| Package Level 2 Depth / Length | 570.000 mm |
| Package Level 2 Gross Weight | 12.76 kg |
| Package Level 2 EAN | 3800161600265 |

Ordering

| | |
|------------------------|---------------|
| Minimum Order Quantity | 1 piece |
| Customs Tariff Number | 85381000 |
| Country of Origin | Bulgaria (BG) |

Certificates and Declarations (Document Number)

| | |
|--------------------------------|-----------------------|
| Declaration of Conformity - CE | No declaration needed |
| Instructions and Manuals | No document needed |

Popular Downloads

| | |
|-----------------------------------|--------------------|
| Data Sheet, Technical Information | No document needed |
| Instructions and Manuals | No document needed |

Classifications

| | |
|---------------|-------------------------------------|
| ETIM 7 | EC000214 - Small distribution board |
| ETIM 8 | EC000214 - Small distribution board |
| WEEE Category | Product Not in WEEE Scope |

Categories

Low Voltage Products and Systems → Enclosures → Consumer Units → Consumer Units → basic E Flush Mounted

